



ONE STEP IMMIGRATION
Your Future is our Commitment

MAP BUILDING

SUBSTANCE OFFICES



CONTENTS

1. Company Profile
2. Cyprus
3. Larnaca
4. Description
5. Location
6. MAP building front side
7. Floor Plan
8. Contact us



A&A IMMIGRATION ONESTEP SERVICES LTD.

We are a Synergy of professional business consultants with more than 20 years of experience in Corporate Matters, International Taxation, Asset Protection and Immigration Services.

During the years we have been giving a professional advice to a large number of High Net worth Individuals on corporate restructuring for tax optimization, asset protection, and going a step further, of how to save and protect the accumulated wealth for the future generations through Asset and Citizenship diversification.

Our Services:

- Assistance to obtain Permanent Residency and/or Citizenship in Cyprus and/or Greece
- A to Z assistance in finding and purchasing properties to fulfill the criteria
- Tax advice and Tax Planning (individual and corporate)
- Corporate and Fiduciary services including provision of Substance for Corporate clients
- Opening of bank accounts (individual and corporate) in Cyprus



ONE STEP IMMIGRATION
Your Future is our Commitment

CYPRUS

Cyprus is the third largest island in the Mediterranean Sea, at the crossroads of the three major continents of Europe, Asia and Africa. It has been a member state of the European Union since 2004.

The strategic location of the island engenders its trade and tourism industry, whilst it develops and maintains a dynamic and stable economy with one of the lowest tax regimes in the EU, thus creating an attractive, reliable and investor-friendly environment, with varieties of investment opportunities.

The shiny whether 340 days per year, mild winters, delicious Mediterranean cuisine, but most of all the warm and welcoming people, makes Cyprus a complete value destination.

Cyprus has been ranked, as one of the world's top ten safest and best destinations to travel and relocate.



LARNACA

Larnaca is a modern European city, the 3rd largest city of Cyprus, home to the main International Airport, a busy touristic and commercial port and a marina for yachts and sailing boats. An extensive highway network offers easy access to the rest of the island (only 25 min. drive from the capital Nicosia and 35 min. drive from Limassol).

The city has ancient culture dating back hundreds of years of different civilizations and architecture, Larnaca is a city that combines the best of both worlds.

Larnaca offers 75km of coastline with superb blue flag sandy beaches and it is the city with the most potential for growth in all aspects.



DESCRIPTION

As from September 2019 we are offering for rent 8 fully fledged offices specially designed for the needs of international clients, who would like to have a Substance in Cyprus.

Each office will be fully furnished with an office table, a chair, shelves, a PC, and a dedicated phone and internet line.

There is a common reception and a large conference room available for meetings.



ONE STEP IMMIGRATION
Your Future is our Commitment

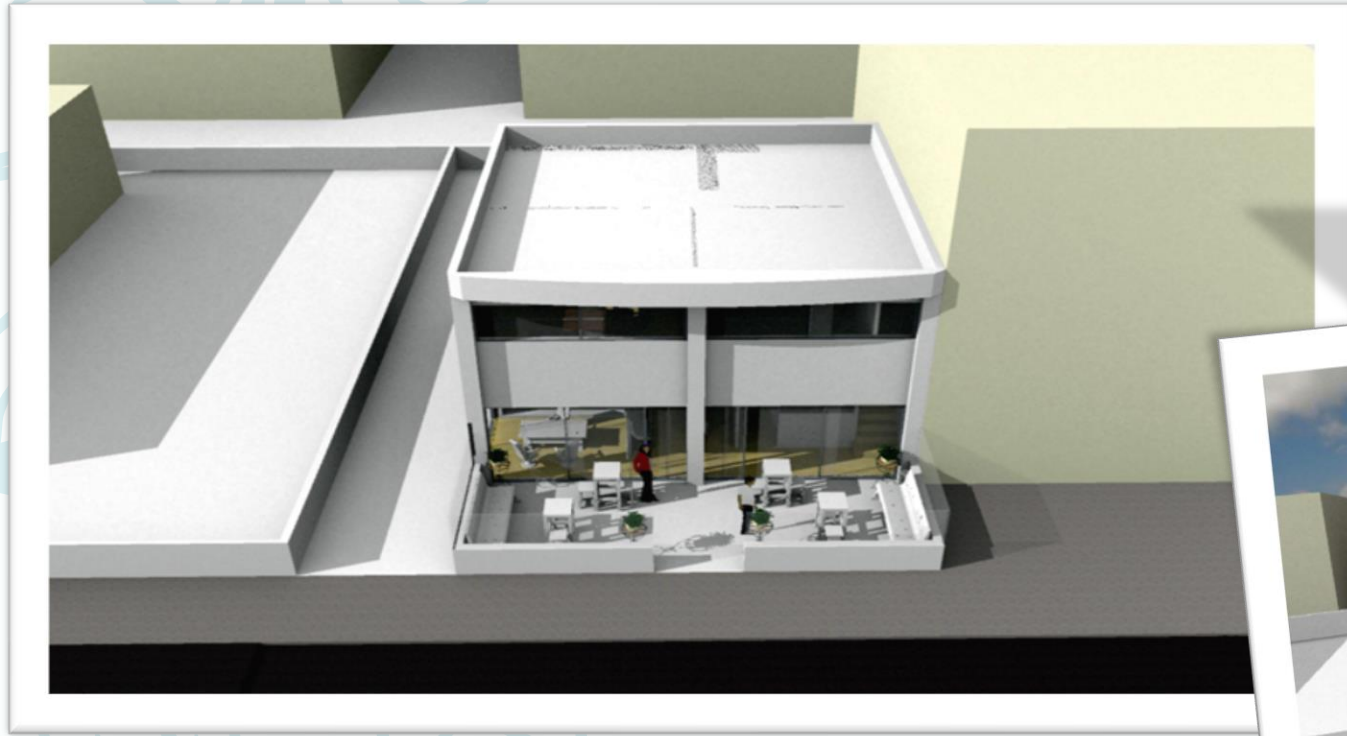
LOCATION

MAP Building is located in a quiet street in the city centre of Larnaca with an easy access to all governmental offices, walking distance to a shopping area and just 10 min. drive from Larnaca Airport.



48A Sittika Hanoum Street, MAP Building,
6051, Larnaca,
Cyprus

MAP BUILDING FRONT SIDE



GROUND FLOOR



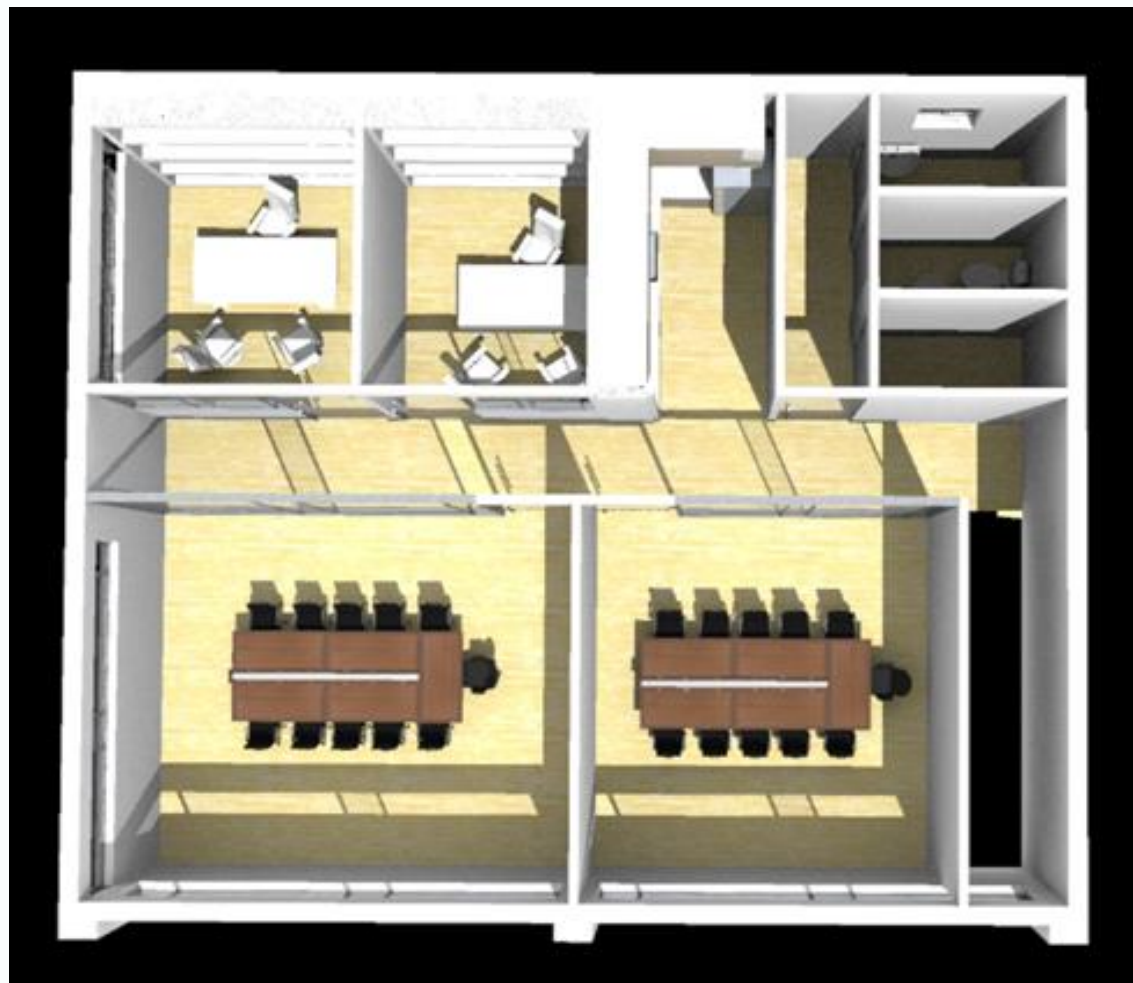
ONE STEP IMMIGRATION
Your Future is our Commitment



| | |
|---------------------|---------------------|
| OFFICE 1 | SIZE 8.40 m2 |
| OFFICE 2 | SIZE 8.40 m2 |
| OFFICE 3 | SIZE 9.05 m2 |
| OFFICE 4 | SIZE 6.72 m2 |
| OFFICE 5 | SIZE 8.55 m2 |
| SERVICE SECULATIONS | SIZE 32.67 m2 |
| STORAGE | SIZE 2.90 m2 |
| SERVER | SIZE 2.58 m2 |
| W.C. | SIZE 9.10 m2 |



FIRST FLOOR

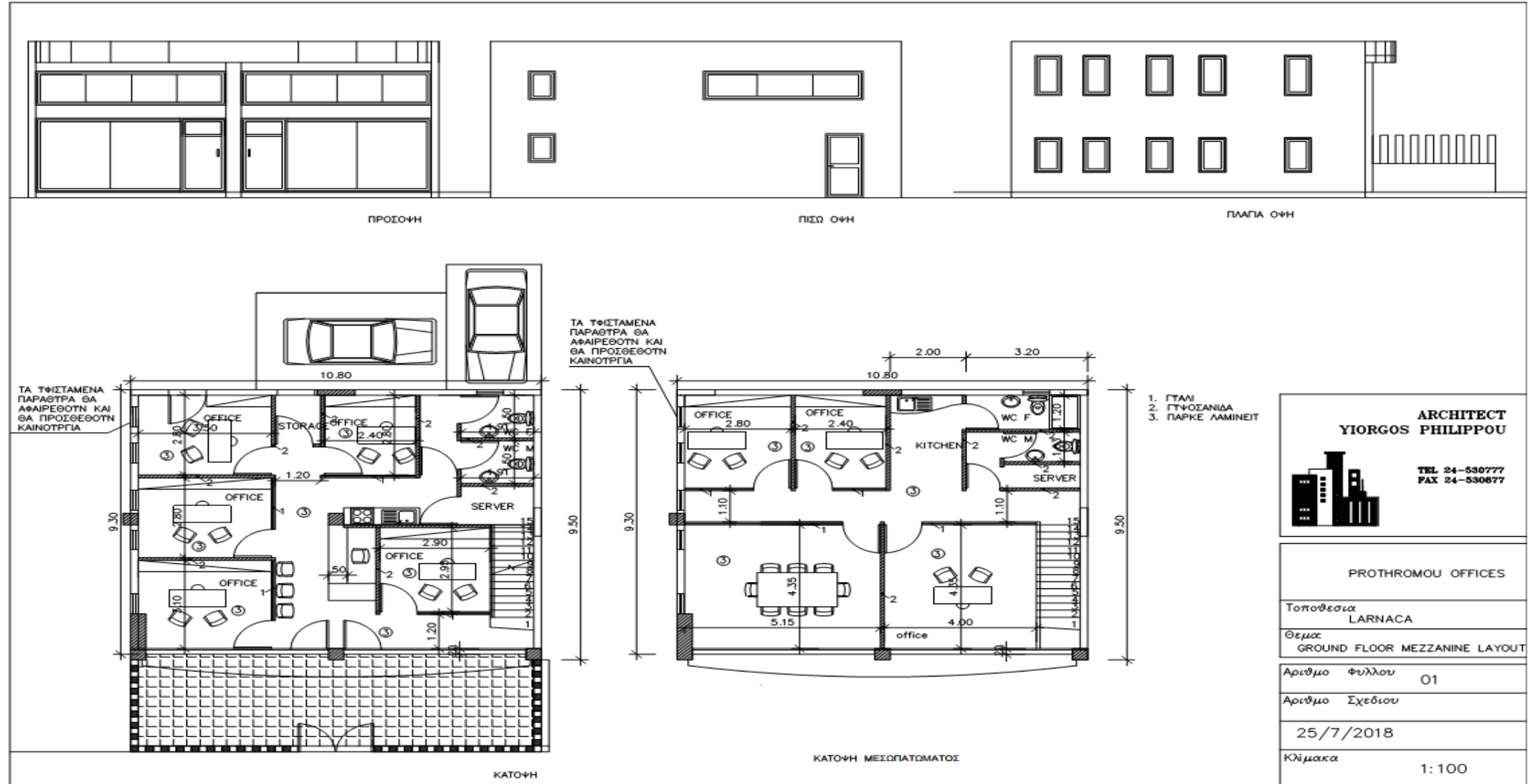


| OFFICE 6 | SIZE 9.10 m ² |
|---------------------|---------------------------|
| OFFICE 7 | SIZE 7.80 m ² |
| OFFICE 8 | SIZE 22.15 m ² |
| OFFICE 9 | SIZE 17.40 m ² |
| SERVICE SECULATIONS | SIZE 17.91 m ² |
| STORAGE | SIZE 5.85 m ² |
| W.C. | SIZE 3.60 m ² |
| | |

FLOOR PLAN



ONE STEP IMMIGRATION
Your Future is our Commitment



CONTACT US



Adelina Santis
CEO & Partner



41-43 Spyrou Kyprinou
Patroclos Tower, 2nd Floor
P.C.6051, Larnaca, Cyprus



santis.a@onestep-visa.com



Tel: +357 24201550
Mob.: +357 96999871